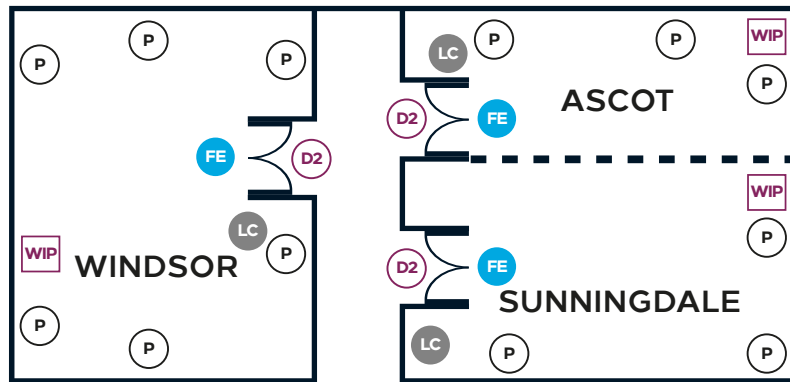
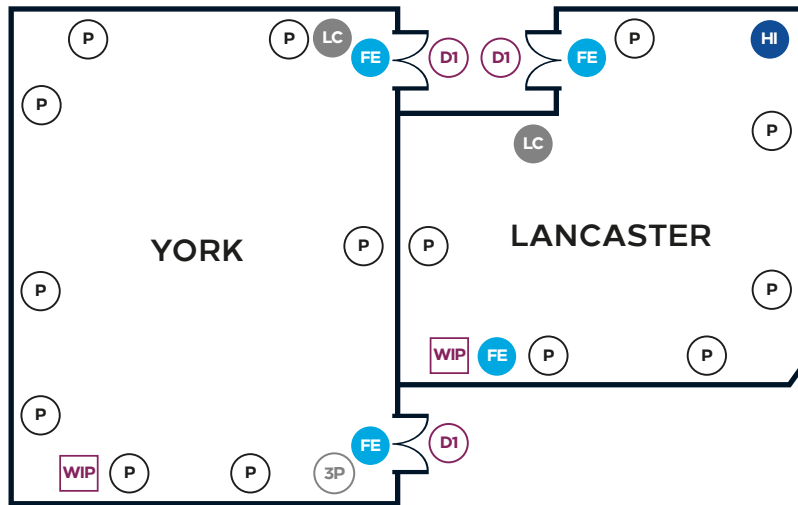


# York, Lancaster, Ascot, Windsor & Sunningdale

## Hilton Birmingham Metropole



FLOORPLAN



KEY

- HI Hardwire Internet Point
- WIP Wifi Point
- 3P Three Phase Power
- P Power Point
- FE Fire Exit
- LC Lighting Controls
- D1 1.6m x 2.2m
- D2 1.69m x 2.04m

ABOUT THE SPACE

With space for up to 100 guests, our lower ground floor smaller spaces of the York and Lancaster are ideal as syndicate rooms or for those smaller creative catch-ups and discussions. Both spaces are air conditioned and licensed until 2.00am for meetings and events.

Upstairs, our Ascot, Windsor and Sunningdale spaces provide a secluded set-up away from the ground floor. The Ascot and Sunningdale can be combined to provide a larger meeting area, while each room has access to our Millers meeting hub, where a variety of light bites from our rolling grazing menu is served.

**SPACE SPECIFICS**

Meeting rooms and technical information	York	Lancaster	Sunningdale & Ascot	Windsor
3-phase power	no	no	no	no
13 Amp	yes	yes	yes	yes
32 Amp	yes	no	no	no
Crystal chandeliers	yes	yes	yes	yes
Lighting controls	yes	yes	yes	yes
Downlighters	yes	yes	yes	yes
Wall lights	yes	no	yes	no
Natural daylight	no	no	no	no
Disabled access/ accessible	yes	yes	no	no
Vehicle access	no	no	no	no
Office space	no	no	no	no
Buffet points	2.5m x 2m per point	2.5m x 2m per point	not available	not available
Buffet point base	1 per 75 people	1 per 75 people	not available	not available
Bar area	152m front/ 4.57m average size	152m front/ 4.57m average size	152m front/ 4.57m average size	152m front/ 4.57m average size
Logo size for lit bar fronts	1.5m x 0.99m	1.5m x 0.99m	1.5m x 0.99m	1.5m x 0.99m
Glass/formica table tops	1.19m/0.89m/ 1.04m height 0.66m x 0.66m/ 0.89m x 0.89m/ 0.74m x 0.74m top	1.19m/0.89m/ 1.04m height 0.66m x 0.66m/ 0.89m x 0.89m/ 0.74m x 0.74m top	1.19m/0.89m/ 1.04m height 0.66m x 0.66m/ 0.89m x 0.89m/ 0.74m x 0.74m top	1.19m/0.89m/ 1.04m height 0.66m x 0.66m/ 0.89m x 0.89m/ 0.74m x 0.74m top
TV aerial point	no	no	no	no
Weight loading	n/a	n/a	n/a	n/a
PA	yes	no	yes	no



Capacities	Boardroom	U-Shape	Theatre	Theatre back projection	Classroom	Classroom back projection	Cabaret	Cabaret back projection	Banquet	Dinner Dance	Reception	Buffet (informal)
York	36	40	100	—	65	—	56	—	100	60	150	100
Lancaster	30	—	50	—	40	—	40	—	60	—	80	60
Ascot	20	20	45	—	20	—	30	—	—	—	60	—
Windsor	20	20	45	—	20	—	30	—	—	—	60	—
Sunningdale	20	20	45	—	20	—	30	—	—	—	60	—

Dimensions	Dimensions L x W (m)	Height Max (m)	Height Min (m)	Area (m2)
York	13 x 9	3.3	2.7	117
Lancaster	10 x 9	3.1	2.6	90
Ascot	10.5 x 6	2.8	2.4	63
Windsor	9 x 6	2.8	2.4	54
Sunningdale	9 x 7	2.8	2.4	63

**HILTON BIRMINGHAM METROPOLE**  
National Exhibition Centre  
Birmingham | B40 1PP | United Kingdom

W: [birminghammet.hilton.com](http://birminghammet.hilton.com)  
T: +44 (0)121 780 4242  
E: [events.birminghammet@hilton.com](mailto:events.birminghammet@hilton.com)

